

EPSON
EXCEED YOUR VISION



Epson DC-11 DOCUMENT CAMERA



A visual learner's dream.

The perfect tool for a dynamic learning environment, the Epson DC-11 makes it easy to display textbooks, experiments and 3D objects to promote engaging interactive lessons. Display up to two full pages with amazing clarity and detail. The DC-11 features a 5-megapixel sensor, 10x digital zoom, and 30 frames-per-second video (at full resolution) for stunning image quality and performance. Capture classroom lessons like never before with the DC-11's A/V capture capability and built-in microphone. Use the included software to easily upload and post what you've captured to your favorite classroom website for students that have missed the lesson or are taking the class remotely.¹ When it's time to share live video, as well as captured images, use the convenient split-screen feature. Innovative teaching tools, advanced connectivity, and a compact, durable design make the DC-11 an ideal fit in any educational setting.

Amazing image quality — 5-megapixel sensor and SXGA/WXGA/XGA resolution

Ultra smooth video performance — 30 frames-per-second video at full resolution

Easily record audio and video — built-in microphone and advanced software functions



Epson DC-11 DOCUMENT CAMERA

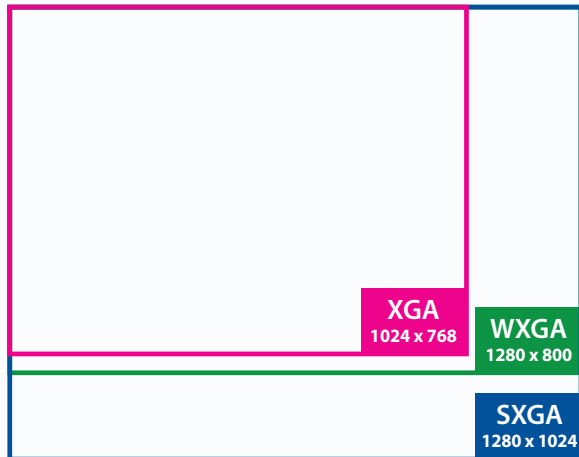
The perfect partner to Epson projectors — the best-selling projectors in the world.

Epson understands education and has a solution no matter what your teaching scenario. Built with image quality and reliability in mind, Epson projectors enhance communication and inspire collaboration, while offering a low total cost of ownership. From long-throw projectors designed for traditional educational settings to ultra-short-throw, interactive, and all-in-one solutions built for progressive classrooms, Epson has the model made for you.



Auto-select output resolution (SXGA, WXGA, XGA) for easy setup and operation

The DC-11 automatically detects the native aspect ratio of Epson projectors and selects the output resolution to match. It is capable of displaying SXGA, WXGA and XGA resolutions. And, it can be used with the latest generation widescreen computers.



Amazing image quality and performance

- 5-megapixel sensor for high quality images
- 30 frames-per-second video at full resolution for ultra smooth video performance
- 10x digital zoom, including 2x lossless for ultra sharp detail



Intuitive buttons and icons



Better Products for a Better Future™

For more information on Epson's environmental programs, go to eco.epson.com



Eco Features

- RoHS compliant
- Designed to be recycled²
- Epson America, Inc. is a SmartWaySM Transport Partner³



You asked, we delivered

Fast, simple setup with advanced connectivity and flexible teaching tools

- Versatile connectivity including:
 - USB for easy connection to a PC/Mac®
 - VGA and Composite for easy connection to a projector
 - Built-in SD card slot
- 12" x 17" capture area makes it easy to display two full pages
- Simultaneously display live and captured images using the split-screen function
- Microscope adapter included — allows the entire class to see a magnified image at the same time
- Store images with 1GB internal memory or export images to an SD card



Built-in SD card slot



VGA and Composite connection to a projector



▲ Microscope adapter included (Microscope not included)

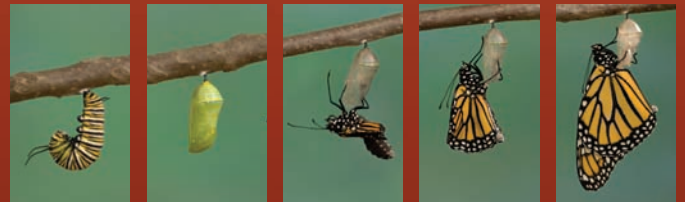


Additional Features/Benefits

- **Great positioning flexibility** — camera head rotates 90 degrees vertically and horizontally to capture many angles
 - Can be used as a webcam to capture the classroom
 - Portrait and Landscape rotation capability
- **Intuitive buttons and icons** — for easy navigation and control
- **Remote control included for your convenience**
 - Enables teachers to walk freely around the room
 - Controls both the Epson DC-11 and your Epson projector

Easy audio/video capture using included software — PC and Mac compatible

- Built-in microphone to record audio with video
- Make annotations over live and captured images
- Time-lapse capture to demonstrate activities such as the growth of plants, organic processes and more
- With your PC, easily upload what you've captured to popular education websites like SchoolTube® and YouTube®¹
- Tag captured images/videos for easy file management and organization



Time-lapse capture function

Sleek, durable design with security features

- Convenient, compact design saves space on your desktop and makes setup quick and easy
- Durable design with robust metal arm
- Kensington® lock support, built-in security bar and mounting holes for added peace of mind



Security bar

Epson DC-11

Document Camera

Product Name	Product Code	UPC
DC-11 Document Camera (ELPDC11)	V12H377020	0 10343 88029 0



Video

Pick-up Device
1/4" CMOS sensor

Effective Pixels
2592 x 1944, 5.0 megapixels

Frame Rate
Analog/USB: 30 fps maximum

Output
Analog: SXGA, XGA, WXGA
USB: QVGA, VGA, SVGA, XGA, SXGA, UXGA

White Balance
Auto

Exposure
Auto

Brightness
Auto

Optical System

Lens
F – number: 2.8

Capture Area
11.7" x 16.5"

Zoom
10x digital (includes lossless zoom)

Lossless zoom
2x (XGA/WXGA output)
1.9x (SXGA output)

Focus
Auto

Image Rotation
±90 degrees (horizontal/vertical)

Illumination System

Upper
White LED x 2

Brightness
250 lx (Shooting area: A3)

Functions

Zoom, Freeze, Auto focus, LED, Brightness, Contrast, Negative, Black and white, Split screen, Slideshow, Video capture, Digital scroll (pan/tilt), Flicker reduction, Image rotation, Source (PC/DC), Auto detect aspect

Interface

Interface Port
Input: VGA, Built-in microphone
Output: VGA, USB-B, Composite video

USB Interface
Audio, Video, Mass storage

Other

Operating Temperature
41 ° to 95 °F (5 ° to 35 °C)

Operating Humidity
20 to 80%

Power Supply Voltage
100 to 240 V AC/DC

Power Frequency
50/60 Hz

Output Voltage of AC Power Adapter
DC 12 V

Power Consumption (operating)
14.5 W

Power Consumption (standby mode)

0.46 W

Analog Output Standard
NTSC/PAL

Memory
1 GB internal
SD card slot

Security
Kensington® lock support
Metal security bar
Security mounting holes: 2

Operating System Compatibility
Mac OS® X 10.5.x and 10.6.x
Windows® 7, Windows Vista®, Windows XP SP2 or later

Dimensions (W x D x H)

Open
10.6" x 12.8" x 17.2"

Closed/Folded
10.6" x 7.6" x 9.6"

Weight
4.9 lb

Application Software

Language
13 languages

Functions
Annotation, Edit, Preview, Video capture, Still image capture, Burst-capture, Time-lapse, Web upload, File management

Saving Format
Still Image: JPG, BMP
Video (Windows): WMV, MPG, AVI
Video (Mac): MOV

Support

The Epson ConnectionSM
Pre-sales support (U.S. and Canada):
800-463-7766
Internet website:
www.epson.com

Service Programs
Two-year limited warranty, Epson Road Service program, Epson PrivateLine® dedicated toll-free support

What's In The Box
DC-11 Document Camera, AC power adapter with cord, USB cable, application software CD, remote control, (2) AA batteries, VGA cable, User's Guide CD, Quick Start guide, PrivateLine support card and registration cards

Packaging Specifications

DC-11 Document Camera
Dimensions 12.6" x 10.2" x 12.6" (W x D x H)
Weight 9.4 lb
Country of Origin
China

1 Direct upload feature available on PC only.
2 See our website for convenient and reasonable recycling options at www.epson.com/recycle
3 SmartWay is an innovative partnership of the U.S. Environmental Protection Agency that reduces greenhouse gases and other air pollutants and improves fuel efficiency.